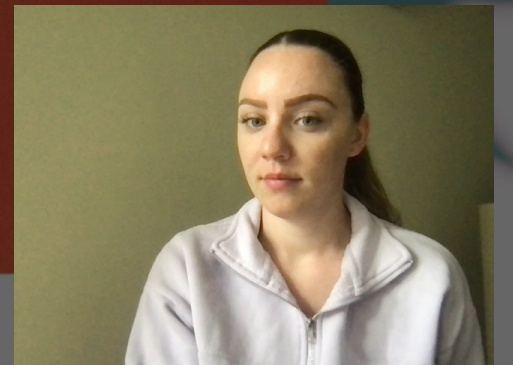

Audience

When writing or speaking we must make deliberate choices about the language we use.

We must consider the person we are talking to/writing to in order to determine whether we use formal, informal or colloquial language



Formal Language

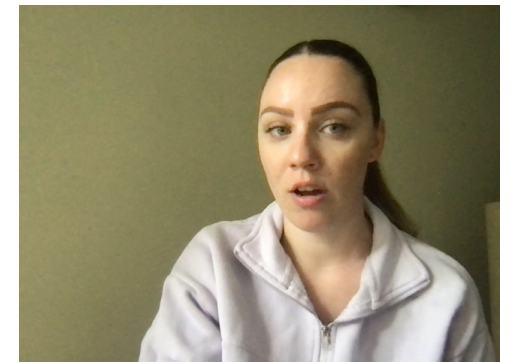
We use this when speaking to adults or important people.

When speaking or writing formally we do not use contractions.

For example, can't is spoken/written as can not

Formal language will often have longer sentences and complex sentences.

For example, I will go to the shopping center on Monday.



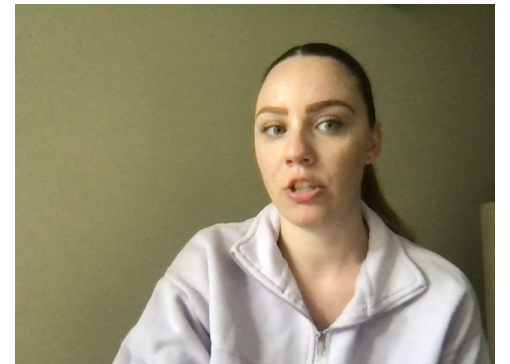
Informal Language

We often use informal language when speaking to people we are familiar with, such as family.

Contractions are used in informal language, such as can't

Informal language often has very short statements, such as 'why not?'

For example, I'm going to the shops on Monday.



Colloquial Language

Colloquial language is very casual and often used when having discussions with friends.

We do not write using colloquial language at school but it is often heard when people speak to each other.

It includes shortened versions of words, such as luv for love or 'I'm *gonna* go' for 'I'm going to go'.

Sometimes key words can be left out, such as 'to' or 'the', which makes it sound lazy.

For example, I'm gonna go shops on Monday arvo.

